

GPS Vehicle Tracking Solutions



u-TRAO™ auto
by Uplink

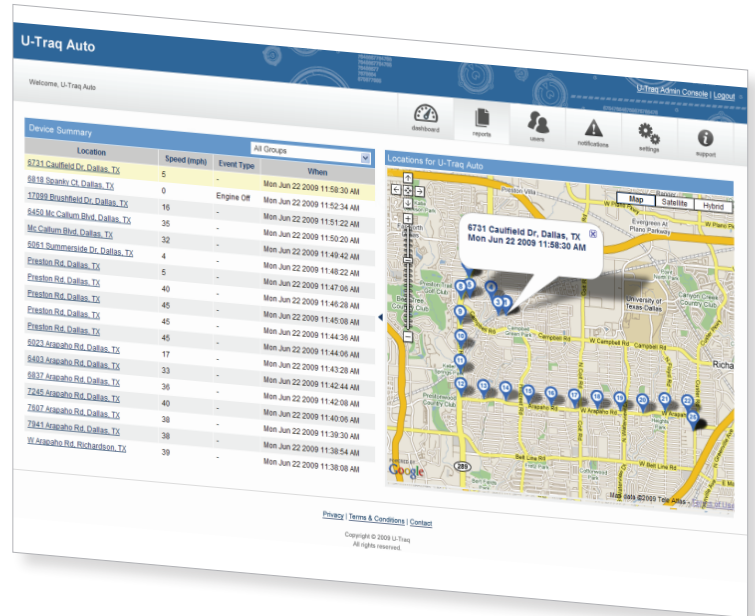
- Simple – installs in seconds
- Perfect for keeping family members safe and protected while on the road
- Reliable and cost effective way to track teen and elderly drivers
- Plugs into the vehicle's OBD* port under the steering column
- Optional cable available for remote mounting



u-TRAO™ autoPRO
by Uplink

- Permanent installation for additional security
- Perfect for small businesses looking to keep track of their company vehicles
- Powered by vehicle – no external power required
- Maintains vehicle location history for up to 60 days and allows you to manage groups

u-TRAO™
by Uplink



Key features of the mapping software include click-to-locate, over-speed alerts, live tracking, trip reporting, Geo-fence set-up and boundary violation alerts, and more.

"GPS Tracking gives me the peace of mind and security of knowing where my kids are and where they've been. u-TRAO helps me ensure they're practicing safe driving habits."

"u-TRAO is truly "plug and play." Simple to install hardware. Easy to set-up tracking account. Couldn't be simpler."

FAQs

What if I forget my login and password for the tracking web site?

Click the "forgot password" icon on the login page. You will be prompted to input the email address used when your account was set up. Press the "Reset Password" button. Once you have sent the request, password reset instructions will be emailed to you.

How accurate is the location?

The u-TRAO mapping system uses the nation's GPS satellite system to locate a vehicle from ten to within a few hundred feet of its actual location. Accuracy can be affected by a number of factors including weather, trees, tall buildings, and the amount of viewable sky. The position is calculated using latitude and longitude, and is only an estimate.

Can I create a custom report?

Yes, you can export reports to a .csv file (excel document, word document, etc.)

Can I receive email alerts for speeding vehicles or other triggers?

Yes, you can configure the system to send email or text message notifications for speed alerts, zone alerts, and low battery notifications. Simply click on the "notifications" tab and follow the simple instructions.

My tracking unit has stopped reporting. What should I do?

You may need to reset your device. For u-TRAO auto, simply unplug the device, wait five minutes and plug back in. For the u-TRAO autoPRO device, contact your installing dealer.

"Finally. A true cost effective way to manage a personal real-time GPS tracker. With U-TRAO, I can track where my children or elderly parents are and where they've been. And with the Locate Now feature, I'm always in touch with my vehicle."

	Basic Plan	Advanced Plan
Typically Used For	Residential Customers or Small Business requiring infrequent spot locating	Businesses requiring small fleet management or residential customers that require comprehensive tracking
Features		
	Locate Now Click to locate from an internet enabled device (computer or cell phone)	Location reporting every 5 minutes while engine is on
	Track Now Request reporting for one hour period with location tracking every five minutes	Locate Now Click to locate from an internet enabled device (computer or cell phone)
	Engine On and Off reporting	Engine On and Off reporting
	Daily Heartbeat	Daily Heartbeat
	Email notifications for up to three user-defined Alert Zones	Email notification for up to three user-defined Alert Zones
	Email notification for One user-defined Speed Alert	Email notification for One user-defined Speed Alert
	60 days history	60 days history



*The location of the OBD port in cars manufactured since 1996 can be found at www.obdclearinghouse.com.

© 2010 Uplink Security LLC. All rights reserved. u-TRAO by Uplink is a trademark of Uplink Security LLC. For more information, please visit www.uplink.com.